



Information Security Associates, LLC.

*Information Security Associates, LLC*

***PLD-1A™***

POWER LINE DETECTOR

# **OPERATOR'S MANUAL**

Rev: January 8, 2008

## The PLD-1A OPERATING INSTRUCTIONS

- 1) The PLD-1 is furnished with a carrying strap which hooks to the handle of the PLD-1. Usually, the PLD-1 is carried over the shoulder.
- 2) Insert the headset plug into the panel receptacle marked **AUDIO**.
- 3) Plug the SS-1 SOUND SOURCE into an active 110 volt wall outlet. It will immediately start to tone pulse. This is the tone you will hear in the headset when you detect a carrier current transmitter.
- 4) Plug the PLD-1 into an AC outlet in the same room. It does not have to be the same outlet, because in most single user offices, all of the outlets are on the same transformer circuit. If you are too close to the SS-1 SOUND SOURCE, you will hear the pulsed tone coming around the headset and not through the PLD-1.
- 5) Adjust the panel control marked **VOLUME** to a comfortable level.
- 6) The **INPUT** switch should be set to **A** and the **FILTER** switch should be set at **B**. Filter setting A is the widest setting and can be used only if there is very little noise on the line.
- 7) Adjust the **VOLUME** control to a **LOUD** level, but be careful not to make the sound uncomfortable to your ears.
- 8) Tune the receiver by turning the control marked **FREQUENCY** through its entire range, while listening for the pulsed tone.
- 9) If there is a carrier current transmitter on this circuit, you will hear the pulsed tone of the SS-1 SOUND SOURCE. Remember that the transmitter may be located in an outlet other than the ones that the SS-1 or the PLD-1 is plugged into. If the SS-1 SOUND SOURCE is loud enough, the transmitter might even be located in an adjacent office.

- 9) Set the **INPUT** switch to the "B" position. Again listen for the pulsing SS-1 SOUND SOURCE.
- 10) Set the INPUT switch to the "C" Position.
- 11) If any slight indication of the SS-1 SOUND SOURCE is heard, in any position of the **INPUT** switch, turn the FILTER switch to the "C" position and readjust the **VOLUME** control. The "C" position of the FILTER SWITCH is the narrowest position of the internal active audio filter and has a higher gain at the SS-1 SOUND SOURCE frequency than at other frequencies which may be present on the power line.
- 12) For very large rooms such as conference rooms, boardrooms or auditoriums, either use several SS-1 Sound Sources or move the SS-1 SOUND SOURCE and PLD-1 to several locations in the room. An area of about 25 x 25 feet is about the largest area to do safely with one surveillance sweep.
- 13) The PLD-1 has a fuse on the rear panel and if for some reason this fuse blows out, replace it with an MDL-I 1 ampere fuse.

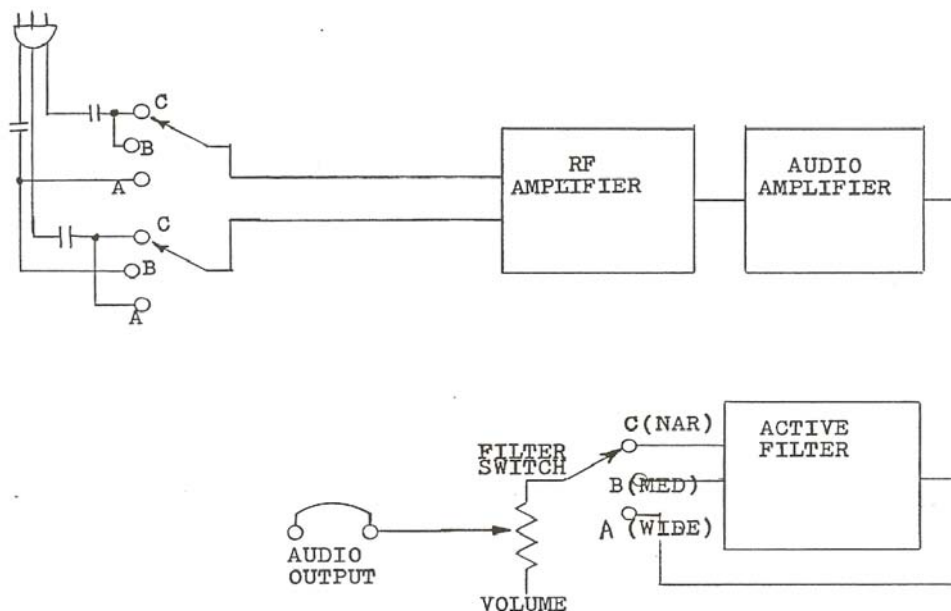


Figure 1 – PLD-1 Functional Block Diagram

**PLD-1 Accessories**

<b>Amount</b>	<b>Stock#</b>	<b>Description</b>
<b>1</b>	<b>41019</b>	<b>SS-1 Sound Source</b>
<b>1</b>	<b>41015</b>	<b>Headset</b>
<b>1</b>	<b>41035</b>	<b>Instruction Manual</b>
<b>1</b>	<b>41012</b>	<b>Attached case #1416</b>
<b>1</b>	<b>41016</b>	<b>Shoulder Strap</b>

## Warranty

Information Security Associates, LLC, warrants to the original user that its products are free from defect in workmanship and material for a period of one year from the date of purchase. Information Security Associates, LLC, under this warranty, is limited to correcting or replacing without charge, at its factory, any part or parts thereof which shall be returned to its factory, transportation prepaid, and upon examination by Information Security Associates, LLC, shall be found to have been originally defective.

INFORMATION SECURITY ASSOCIATES, LLC, SHALL NOT BE LIABLE FOR LOSS OR DAMAGE CAUSED EITHER DIRECTLY OR INDIRECTLY BY USE OF ITS PRODUCTS. THIS WARRANTY SUPERSEDES AND IS IN LIEU OF ALL OTHERS EXPRESSED OR IMPLIED. NO OTHER LIABILITIES MAY BE ASSUMED UNLESS AUTHORIZED IN WRITING BY INFORMATION SECURITY ASSOCIATES, LLC.

For service, technical questions and problems contact:

Information Security Associates, LLC.

6 Spruce Brook Road

Seymour, CT 06483

USA

Tel: 203 736-9587

Fax: 203 736-9639

[www.isa-technology.com](http://www.isa-technology.com)

[isa-hre@comcast.net](mailto:isa-hre@comcast.net)